

# UltraMAX™ Copper Connectivity System

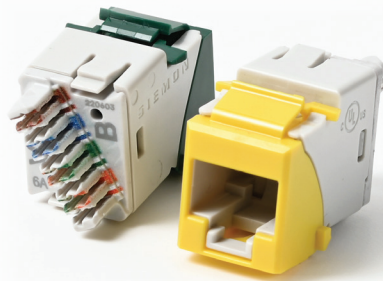
## 5e, 6, 6A UTP Outlets | Regional Availability – Global



The Siemon UltraMAX copper connectivity system utilizes a single platform of innovative outlets for your category 5e, 6 and 6A UTP requirements. The UltraMAX outlets are designed to maximize usability, quality and performance into a sleek footprint that's ideally suited for users to deliver quick, reliable terminations first time, every time.



Hybrid Outlet



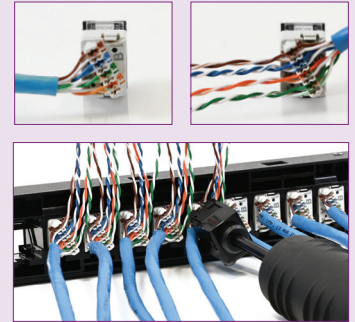
Keystone Outlet

### Intuitive Design

The hybrid outlets' compact design makes it ideal for high-density applications. Users also benefit from the "pass-thru" feature, which allows it to be mounted from either the front or rear of a faceplate. Hybrid outlets may be installed in a flat or angled orientation.

### Multiple Options

All UltraMAX outlets are available in hybrid, keystone and patch panel mounting styles, providing users with a range of options to suit your various installation needs. *\*Panel Outlet not shown.*



### Versatile Installation

Each UltraMAX outlet features a unique linear lacing design which allows users to terminate their connections from either side and deliver fast, consistent terminations, every time.

#### 1. Icon

Icons are ideal for both simple color-coding and easy application identification for your critical connections. *Icons are not included with outlets and sold separately.*



#### 2. Bezel

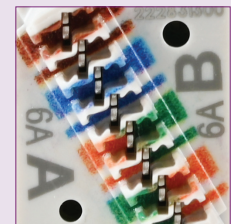
Ideal for color-coding and flexible mounting, these colored bezels bring more than just aesthetics.

#### 3. Outlet

Our UL-listed outlets deliver a sleek and intuitive footprint as well as innovative linear lacing functionality.

#### 4. Termination Cap

Keep your terminated cables secure and reliable with our removable termination cap.



### Guided Termination

Distinct linear lacing channels guide correct conductor placement during termination, while 2-sided color-coding provides simple T568 A or B wiring verification before and after lacing.



### Flexible Mounting

UltraMAX's hybrid bezel allows users to easily install outlets in a flat or angled orientation, while also providing a simple option for color-coding network connections.

## ELECTRICAL SPECIFICATIONS

CONTACT RESISTANCE	20 mΩ
INPUT TO OUTPUT RESISTANCE	200 mΩ
MIN. DIELECTRIC WITHSTAND VOLTAGE (CONTACT TO CONTACT)	1000 V DC or AC peak
INSULATION RESISTANCE	500 MΩ
COMPATIBILITY	Category 5e, 6, and 6A
CURRENT RATING	1.5 A

## MECHANICAL – GENERAL

OPERATING TEMPERATURE	-10 to 60 °C (14 to 140 °F)
FLAMMABILITY RATING	UL 94 V-0
ECO-FRIENDLY FEATURES	RoHS, Lead-free, Halogen-free, PVC-free, Eco-friendly packaging (bulk packaging only)
CONTACT MATERIALS	Copper alloy, plated with 1.27 microns (50 microinches) minimum thick gold or equivalent at contact interface
PLASTIC MATERIALS	Flame retardant thermoplastic
DIMENSIONS (L X W X H)	<b>Hybrid Outlet:</b> 33mm (1.3") x 15mm (0.6") x 21mm (0.83") <b>Keystone Outlet:</b> 33mm (1.3") x 15mm (0.6") x 21mm (0.83") <b>Panel Mount Outlet:</b> 31mm (1.2") x 15mm (0.6") x 20mm (0.8")

## MECHANICAL – OUTLET

NUMBER OF INSERTION CYCLES	2,500
MINIMUM PLUG RETENTION FORCE	50N (11.2 lbf)
PLUG COMPATIBILITY	Compatible with RJ45 (8-position) or RJ11 (6-position) plugs

## MECHANICAL – TERMINATION

RECOMMENDED WIRE SIZE (NOMINAL)	22-24 AWG solid and 24-26 AWG stranded
WIRE INSULATION DIAMETER RANGE (MAX)	1.38mm (0.054")
CONDUCTOR OD SIZE (MAX)	0.60mm (0.023")
RE-TERMINATIONS	20
WIRING	T568A/B

## COMPLIANCE

ISO/IEC 11801-1 Ed.1.0
IEC 60603-7-41
IEC 60512-99-002 (3 <sup>rd</sup> party verified)
ANSI/TIA-568.2-D
ANSI/TIA 1096-A
ETL Channel Tested
IEEE 802.3af (Type 1 PoE)
IEEE 802.3at (Type 2 PoE)
IEEE 802.3bt (Type 3 and 4 PoE)
Power over HDBaseT™ (PoH)
UL 2043 (air handling spaces)
UL 1863



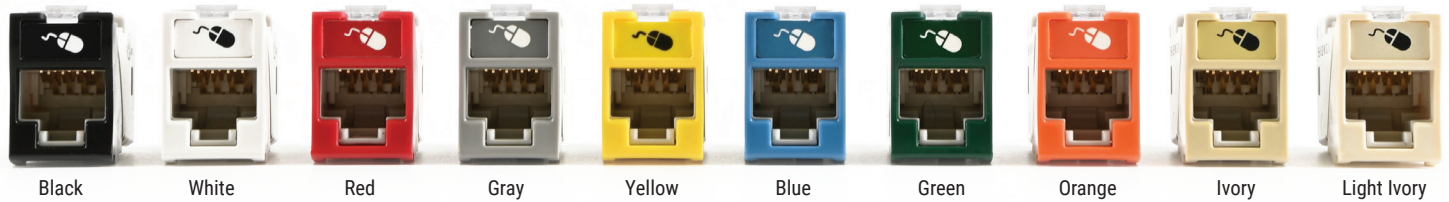
Siemon's **PowerGUARD** technology with a 75°C operating temperature improves heat dissipation for reduced length derating and bundling requirements in remote powering applications, including PoE and power over HDBaseT (PoH).

# Ordering Information

## UltraMAX Outlets

U (X or XX) - (X) (XX) (X) (X)

PERFORMANCE CATEGORY	MOUNTING STYLE	BEZEL COLOR	DOOR OPTION	PACKAGE TYPE	
5 = 5e UTP 6 = 6 UTP 6A = 6A UTP	H = Hybrid Flat/Angled K = Keystone* P = Panel	00 = No Color** 01 = Black 02 = White 03 = Red 04 = Gray 05 = Yellow 06 = Blue 07 = Green 09 = Orange 20 = Ivory 80 = Light Ivory	N = No Door D = Door	S = Single Standard Pack B = Bulk Pack***	<p>*Keystone and panel versions are not compatible with icons and do not have door options.</p> <p>**Use 00 for bezel color when specifying panel mount version.</p> <p>***Eco-friendly bulk packs sold with MoQ of 100 and order increment of 100 outlets.</p> <p>Additional colors available upon request. Contact Siemon Customer Service for more information.</p> <p>Termination caps are included with outlets.</p> <p>Icons are not included with outlets and sold separately.</p> <p>UltraMAX palm guard insert is included in each standard pack of 20 outlets and bulk pack of 100 outlets.</p>



Door Option      Eco-Friendly Bulk Pack      Termination Caps – Included with Outlets      Panel/Port Blank      Palm Guard Insert      Icons – Sold Separately

**Front**  
1 Red Data  
1 Blue Data  
1 Bezel Color-Matching Data  
1 White Blank

**Back**  
1 Red Voice  
1 Blue Voice  
1 Bezel Color-Matching Voice  
1 Bezel Color-Matching Blank

For information on our eco-friendly packaging, see the QR Code on page 2.

## UltraMAX Accessories

Part Number	Description
U-TCAP	UltraMAX outlet termination cap, Box of 100
Z-BL-01	Panel Blank, Bag of 10, Black rubber, Fits in empty Z-MAX®/UltraMAX panel opening as well as any RJ-45 port for dust protection
Z-ICON-(XX) B	Icon, Z-MAX/UltraMAX, Box of 100 <b>XX = Color</b> 01 = Black      03 = Red      05 = Yellow      07 = Green      09 = Orange      25 = Bright White      82 = Alpine White 02 = White      04 = Gray      06 = Blue      08 = Violet      20 = Ivory      80 = Light Ivory

Siemon provides a variety of termination tools for UltraMAX outlets. View our full offering [here](#).

For information on the complete line of UltraMAX patch panels, click [here](#).

For information on the UltraMAX TurboTool, click [here](#).

Because we continuously improve our products, Siemon reserves the right to change specifications and availability without prior notice.

<b>North America</b> P: (1) 860 945 4200	<b>Mexico</b> P: (521) 556 387 7708/09/10	<b>Latin America</b> P: (571) 657 1950/51/52	<b>Europe</b> P: (44) 0 1932 571771	<b>China</b> P: (86) 215385 0303	<b>India, Middle East &amp; Africa</b> P: (971) 4 3689743
<b>Asia Pacific</b> P: (61) 2 8977 7500	<b>Siemon OEM Technologies</b> P: (1) 860 945 4213 <a href="http://www.siemon.com/OEM">www.siemon.com/OEM</a>				

